

How to synchronize contents of two tables.

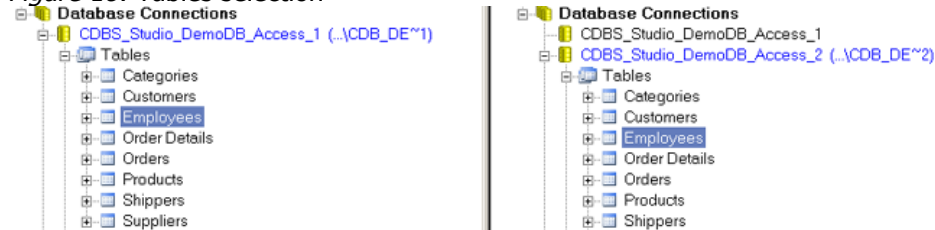
Key Points:

- The data synchronization of the selected tables pair is one-way. In order to synchronize in both directions, it is necessary to carry out two synchronization procedures.
- The data synchronization consists of two subsequent stages:
 1. **Comparison** for finding the data differences
 2. **Synchronization** itself - generating the appropriate synchronization script and its execution.
- At the comparison stage, the program is using same rules and settings that are used for simple data-comparison.
- The execution of the generated synchronization script can be launched immediately following the conclusion of the synchronization procedure, or it can be postponed and launched later.
- The user is able to save the synchronization script into a file for further analysis and future use.

The Data Synchronization Procedure:

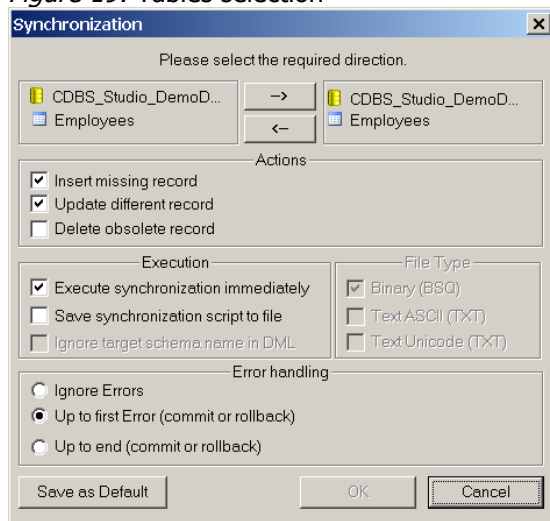
1. Select the tables intended for synchronization from the left and right panes:.

Figure 18: Tables selection



2. Use **Synchronize > Table/View Data** menu command
3. Define the synchronization parameters in the **Synchronization** dialog

Figure 19: Tables selection



- Synchronization options:

- Insert missing record - Insert/do not insert the records that are present in the source table but are missing from the destination table
 - Update different record - Change/do not change the fields' values in differing records
 - Delete obsolete record - Delete/do not delete records that are present in the destination table but are absent from the source table
 - Type of the executed operation:
 - Execute synchronization immediately - Run/do not run the prepared synchronization commands immediately
 - Save synchronization script to file - Save/do not save the synchronization commands, generated during the comparison process, into a file
 - Means of managing errors:
 - Ignore Errors - Ignore any errors, continue the procedure, and save successfully executed changes in the target table.
 - Up to the first Error - Stop the procedure at the detection of the first error and do not save any changes in the target table.
 - Up to End - Continue the procedure regardless of any errors; however, do not save any changes in the target table if any error is detected.
4. Click **OK** to start the synchronization

The program will execute the synchronization procedure and notify of the results, at job's end:

Figure 20: Comparison results window

