

## Batch comparison.

Use **Batch Comparison** for comparing groups of tables, views, virtual tables, stored queries or stored procedures - their content and all related database objects structures, indexes, primary keys, foreign keys.

### Key Points:

- Batch comparison is used, in any combination, with pairs of tables, views, virtual tables, and stored queries. This enables group comparison between database tables and stored queries, or between views and virtual tables, and etc.
- The user is able map the objects for comparison.
- Only relevant properties are comparable when objects are compared. Comparison of structures and comparison of data is possible when comparing table object type with view object type. When comparing a stored query object type with a table object type, only data comparison is possible.
- All the settings defined in the workspace for current connections affect the batch comparison as well as globally defined comparison options.

### The Comparison Procedure:

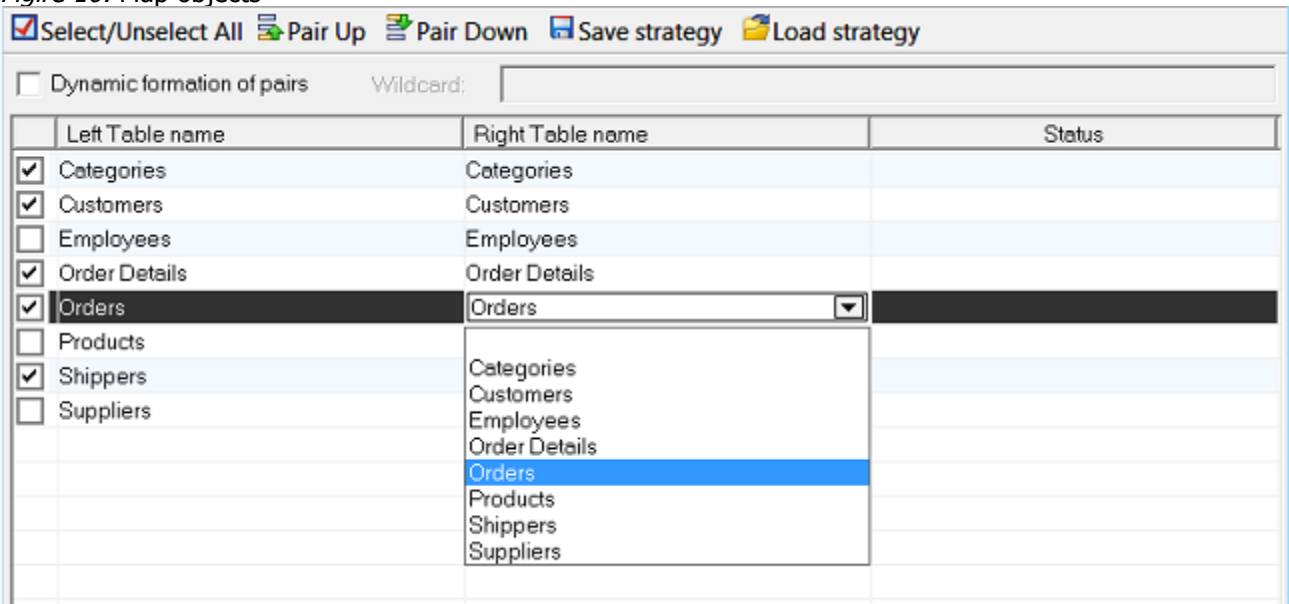
1. Select the groups of objects meant for comparison from the left and right panels (**Tables, Views, Virtual Tables, Stored Queries**):

Figure 15: Group selection



2. Use **Compare > Batch Comparison** menu command
3. Select and map the objects meant for comparison in the **Batch Comparison** dialog box. **NOTE:**The program maps the objects of the selected groups automatically, on the object names basis. However, the user can manually redefine any object pair for comparison.

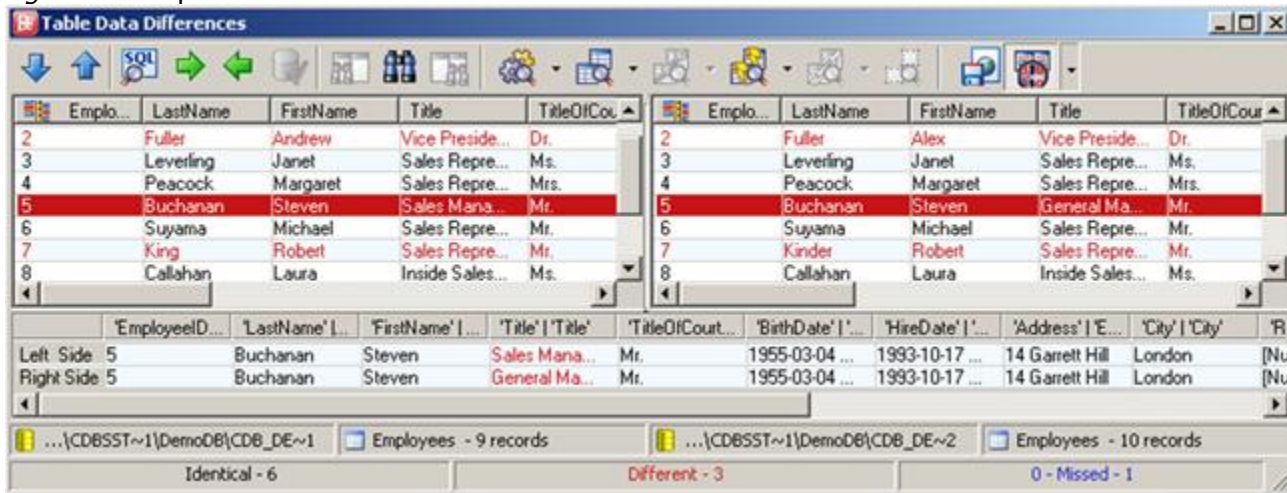
Figure 16: Map objects



- Define what the comparison procedures should be performed (e.g. *Compare structures*, *Compare data*, *Compare indices*, *Compare primary keys*, *Compare foreign keys*) in the **Batch Comparison** dialog box. Use the **Options...** button for changing options and rules of comparison, if desired.

The program will compare the data stored in the selected tables, displaying the results of the comparison on the screen in a separate window:

Figure 12: Comparison results window



The window is divided into three panes:

- The left pane shows the data stored in the table selected on the left pane of the main application window.
- The right pane shows the data stored in the the table selected on the right pane of the main application window.
- The bottom pane refines the found differences between the rows of the selected data rows pair.

Each line of the displayed grid represents a pair of the corresponding (i.e. having same value of IDENTITY KEY) data records in the compared tables.

- The lines representing two different records are marked by red color.
- The lines representing two identical records are marked by black color.
- The lines representing one record only - no corresponding data row is found in the other table - are marked by blue color.

In order to generate comparison report file, select the *Report comparison result into file* mode using the appropriate button on the toolbar of the main application window: 

*If this button is used, the comparison results of ALL of the comparison procedures will be stored into a file.*

*Figure 13: An example of a comparison report*

Comparison Report. Created by Cross Database Software created: 2019-12-02 14:00

Trial version [www.dbbalance.com](http://www.dbbalance.com)

Expand all Collapse all Legend: ■ Fixed records ■ Different records ■ Different only

Connection info

Differences of Tables Data (Employees --- Employees) Different: 5 Having: 1 208

Table - 'Employees'														Table - 'Employees'					
EmployeeID	LastName	FirstName	Title	TitleOfCourtesy	BirthDate	HireDate	Address	City	Region	PostalCode	Country	HomePhone	Extension	ReportsTo	EmployeeID	LastName	FirstName	Title	
1	Devito	Nancy	Sales Representative	N/A	1969-12-08 00:00:00	1992-05-01 00:00:00	507 - 20th Ave. E. Apt. 2A	Seattle	WA	98122	USA	(206) 555-9857	5467	2	1	Devito	Nancy	Sales Representative	
2	Fuller	Andrew	Vice President, Sales	Dr.	1972-02-28 00:00:00	1992-08-14 00:00:00	198 W. Crystal Way	Tacoma	WA	98401	USA	(206) 555-1462	5437	[Null]	2	2	Fuller	Andrew	Vice President, Sales
3	Levelling	Jane	Sales Representative	N/A	1963-08-30 00:00:00	1992-04-01 00:00:00	722 Howe Bay Blvd.	Kirkland	WA	98033	USA	(206) 555-3412	3300	2	3	3	Levelling	Jane	Sales Representative
4	Peacock	Hargard	Sales Representative	N/A	1959-09-29 00:00:00	1992-05-03 00:00:00	410 Old Richmond Rd.	Redmond	WA	98052	USA	(206) 555-8122	5176	2	4	4	Peacock	Hargard	Sales Representative
5	Buchanan	Oliver	Sales Manager	N/A	1955-03-04 00:00:00	1983-10-17 00:00:00	14 Dorset Hill	London	[Null]	SW1 8JH	UK	(71) 555-4444	5453	2	5	5	Buchanan	Oliver	General Manager
6	Suzanne	Michael	Sales Representative	N/A	1963-07-02 00:00:00	1992-10-17 00:00:00	Country House, Nine Rd.	London	[Null]	EC2 7DR	UK	(71) 555-7773	408	5	6	6	Suzanne	Michael	Sales Representative
7	King	Robert	Sales Representative	N/A	1968-01-29 00:00:00	1994-01-02 00:00:00	Edgemoor House, Winchester Way	London	[Null]	W11 1SP	UK	(71) 555-5555	445	5	7	7	King	Robert	Sales Representative
8	Callahan	Leire	Inside Sales Coordinator	N/A	1959-01-09 00:00:00	1994-02-05 00:00:00	4726 - 13th Ave. N.E.	Seattle	WA	98108	USA	(206) 555-1189	3344	2	8	8	Callahan	Leire	Inside Sales Coordinator
9	Dodsworth	Anne	Sales Representative	N/A	1963-07-02 00:00:00	1994-11-15 00:00:00	7 Roundleaf Rd.	London	[Null]	W12 7LT	UK	(71) 555-4444	452	5	9	9	Dodsworth	Anne	Sales Representative
														10	10	Rosenberg	Valery	Programmer	