

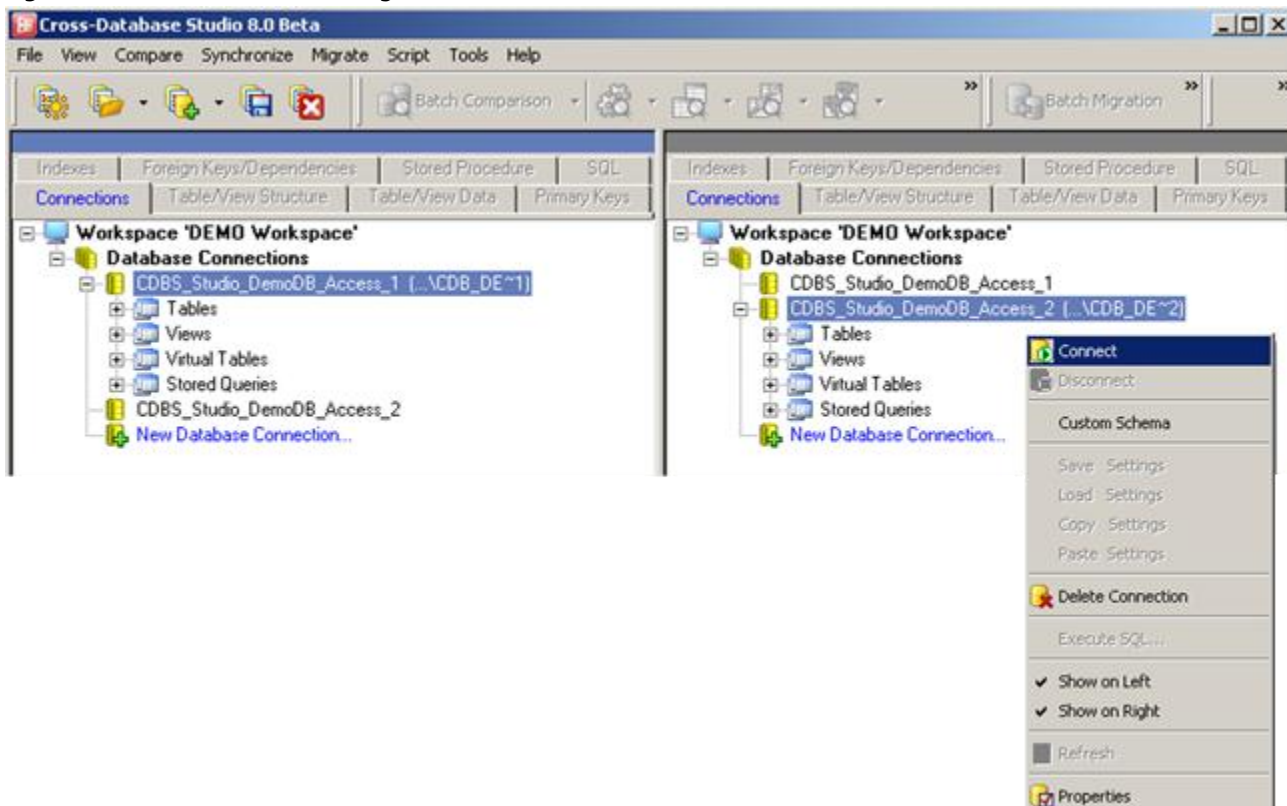
## Connecting to a database. Disconnecting.

On the left panel, select the connection with the name *CDBS Demo Database 1*.  
Now, right-click the connection and select the **Connect** option from the popup menu.

On the right panel, select the connection with the name *CDBS Demo Database 2*.  
Now, right-click the connection and select the **Connect** option from the popup menu.

The program will make the connection with the appropriate database and will download all the meta-data (i.e. table names, view names, field names, etc).

Figure 3: Panel View. Connecting Databases



In order to change connection parameters, select the appropriate connection in the left or right panel.  
Right-click the selection and use **Properties** command, that allows to modify the connection parameters.

To disconnect from a database, select **Disconnect** option from the menu on the appropriate connection.